

2011–2014

**A SURVEY:
What the members think of NALAS...**

by François SAINT-OUEN

Number of answers

Staff (September 2011)

49

from all Member Associations (15)

Average: 3.27 per Association

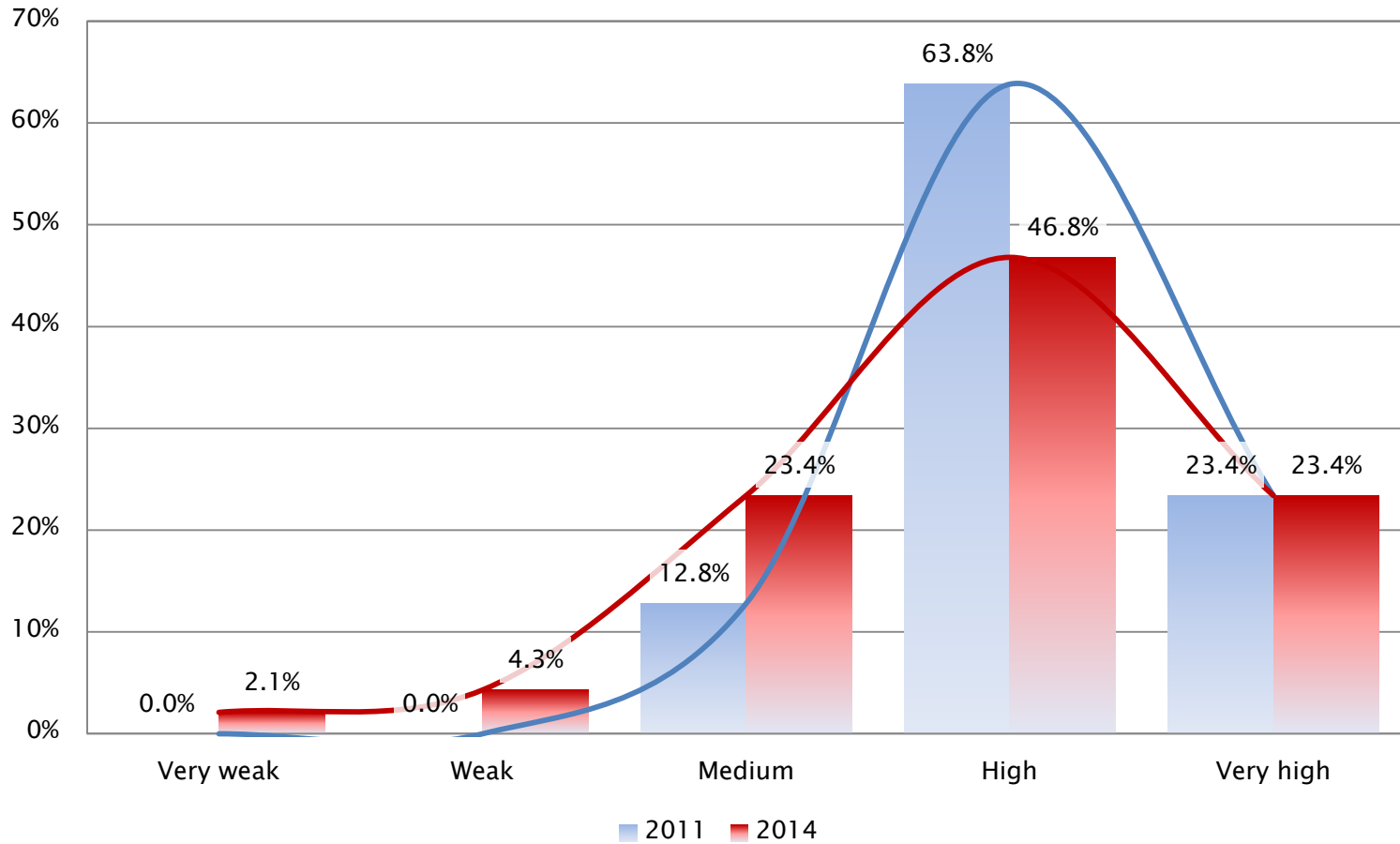
Staff (November 2014)

47

from all Member Associations (16)

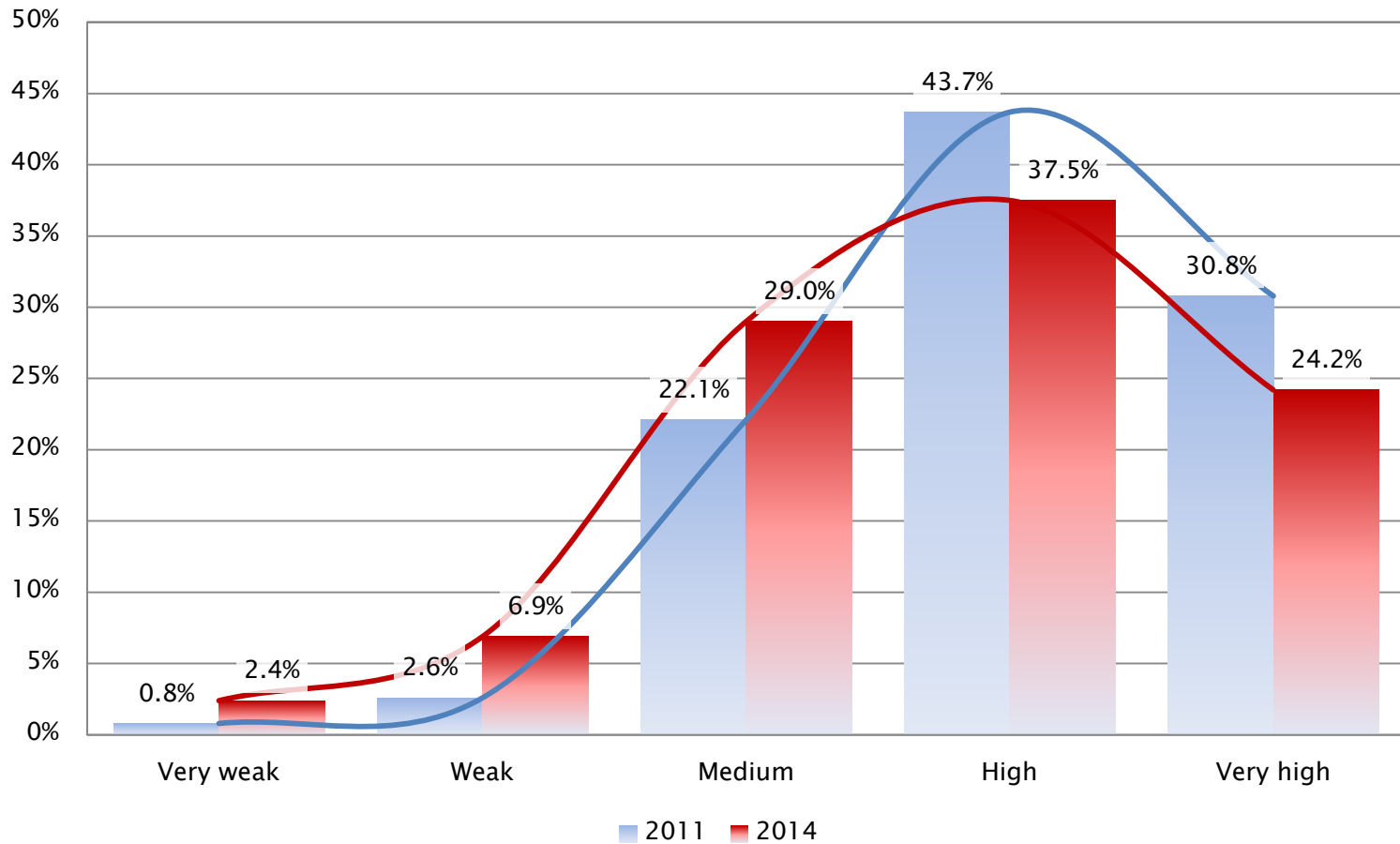
Average: 2.94 per Association

Overall usefulness of NALAS

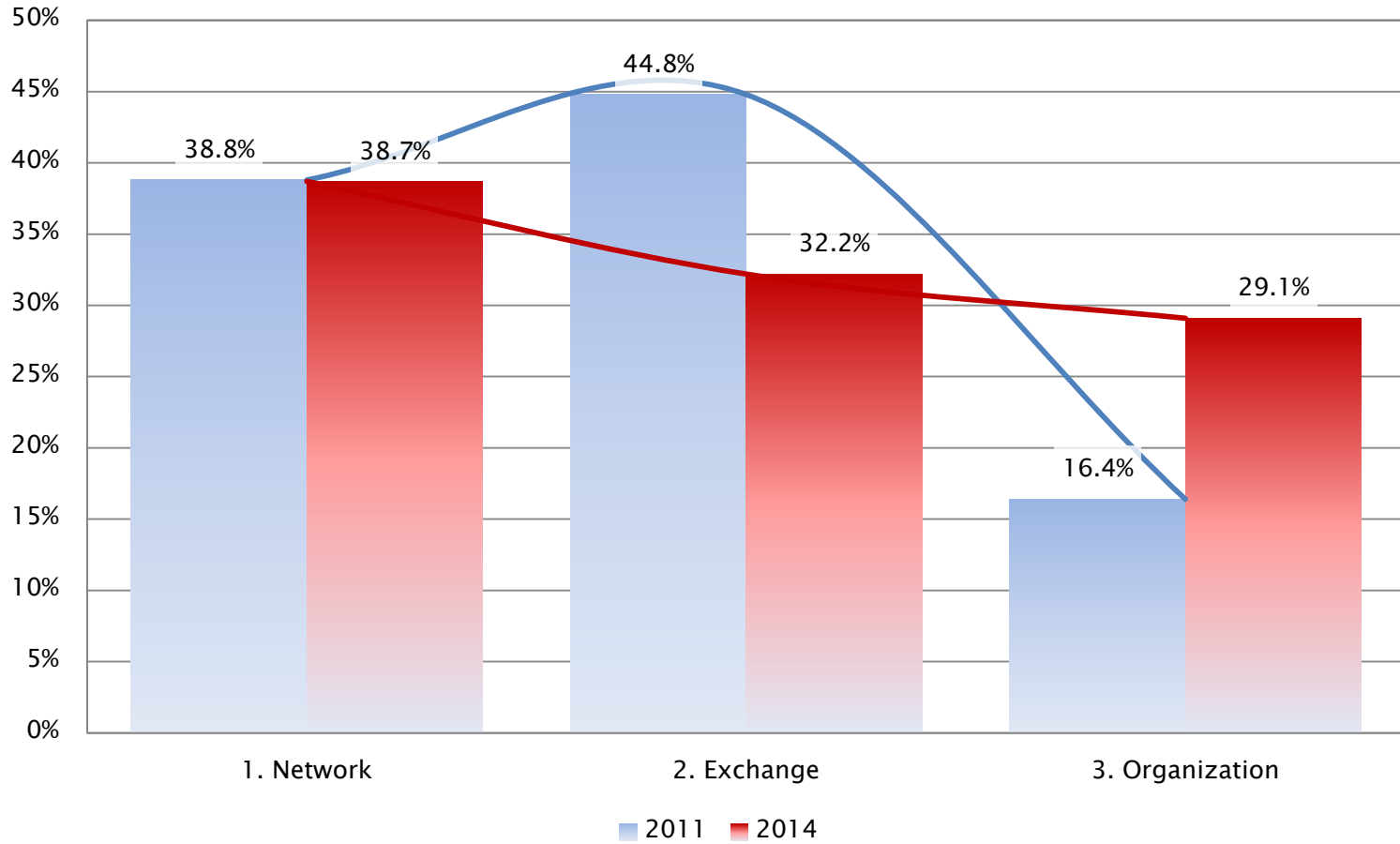


Specific usefulness of services

(based on a list of precise services offered by NALAS)

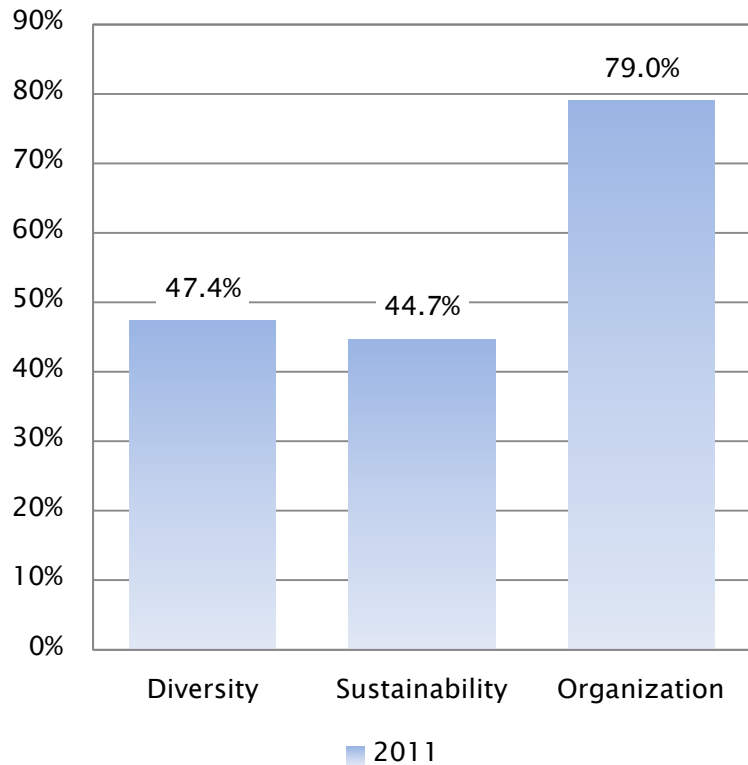


Strongest of NALAS

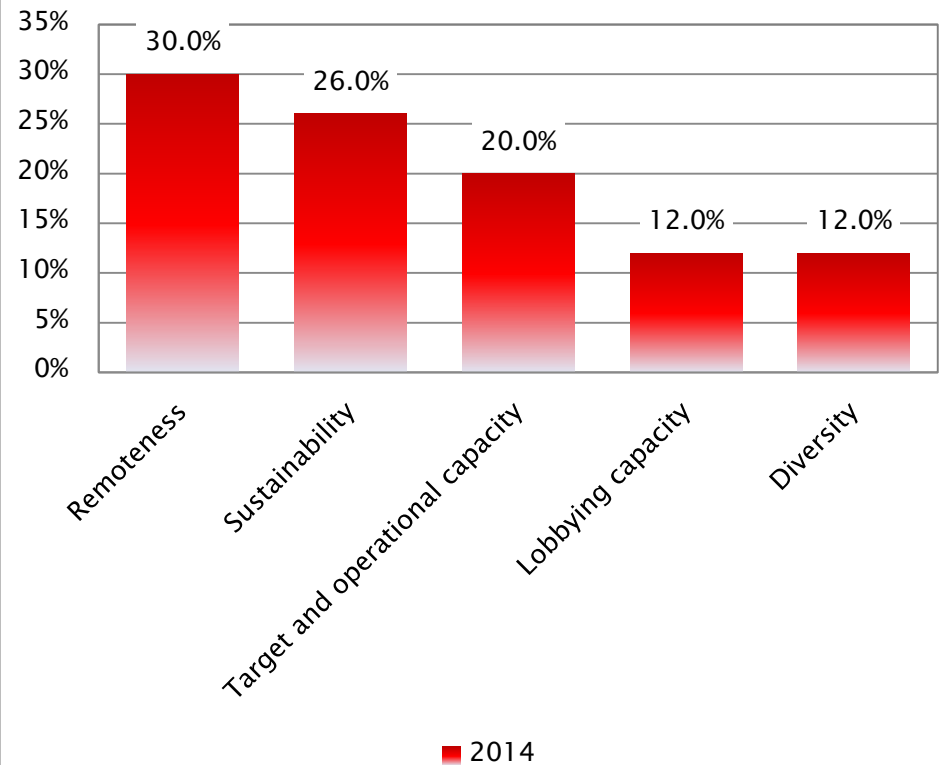


Weakest of NALAS

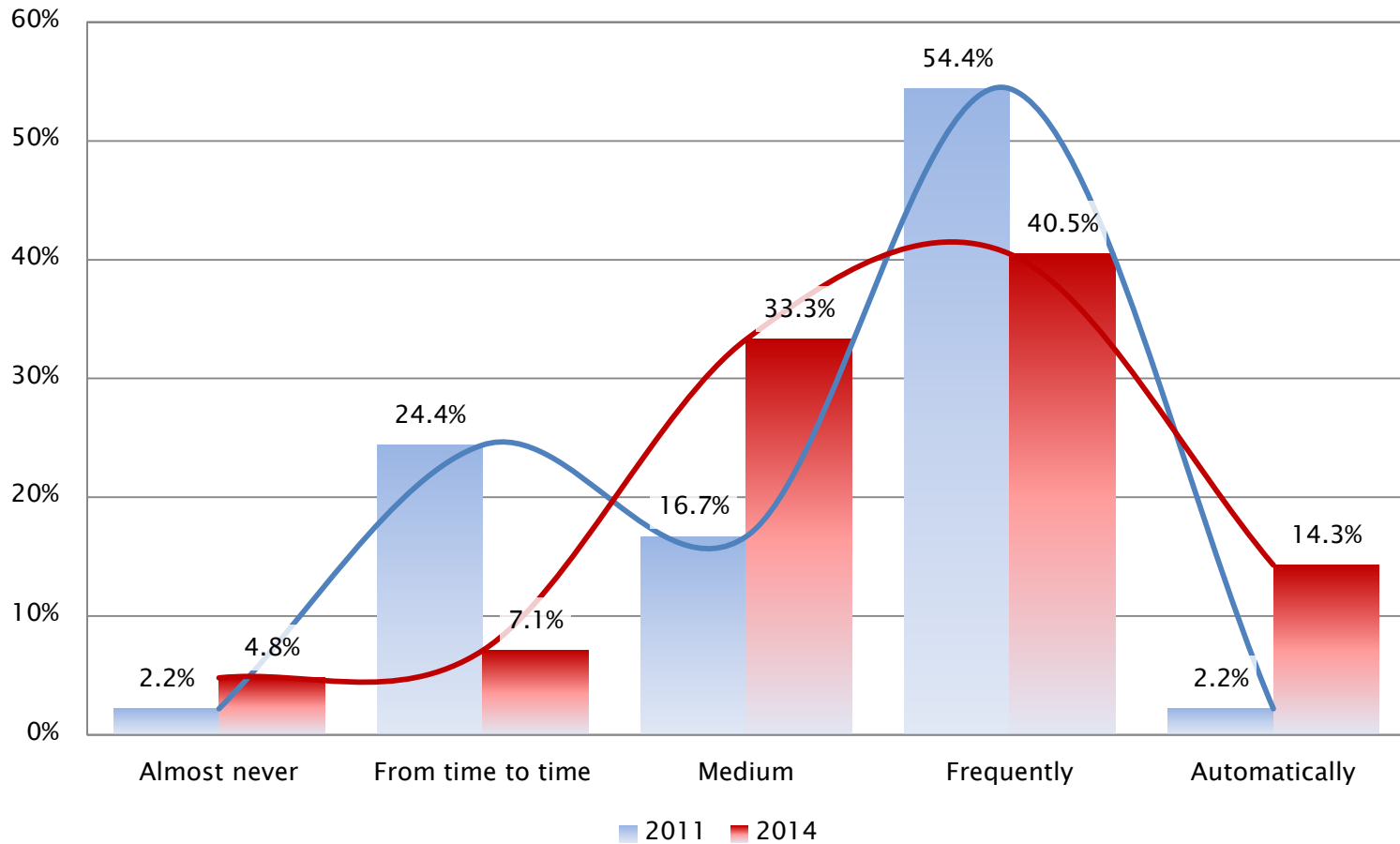
2011



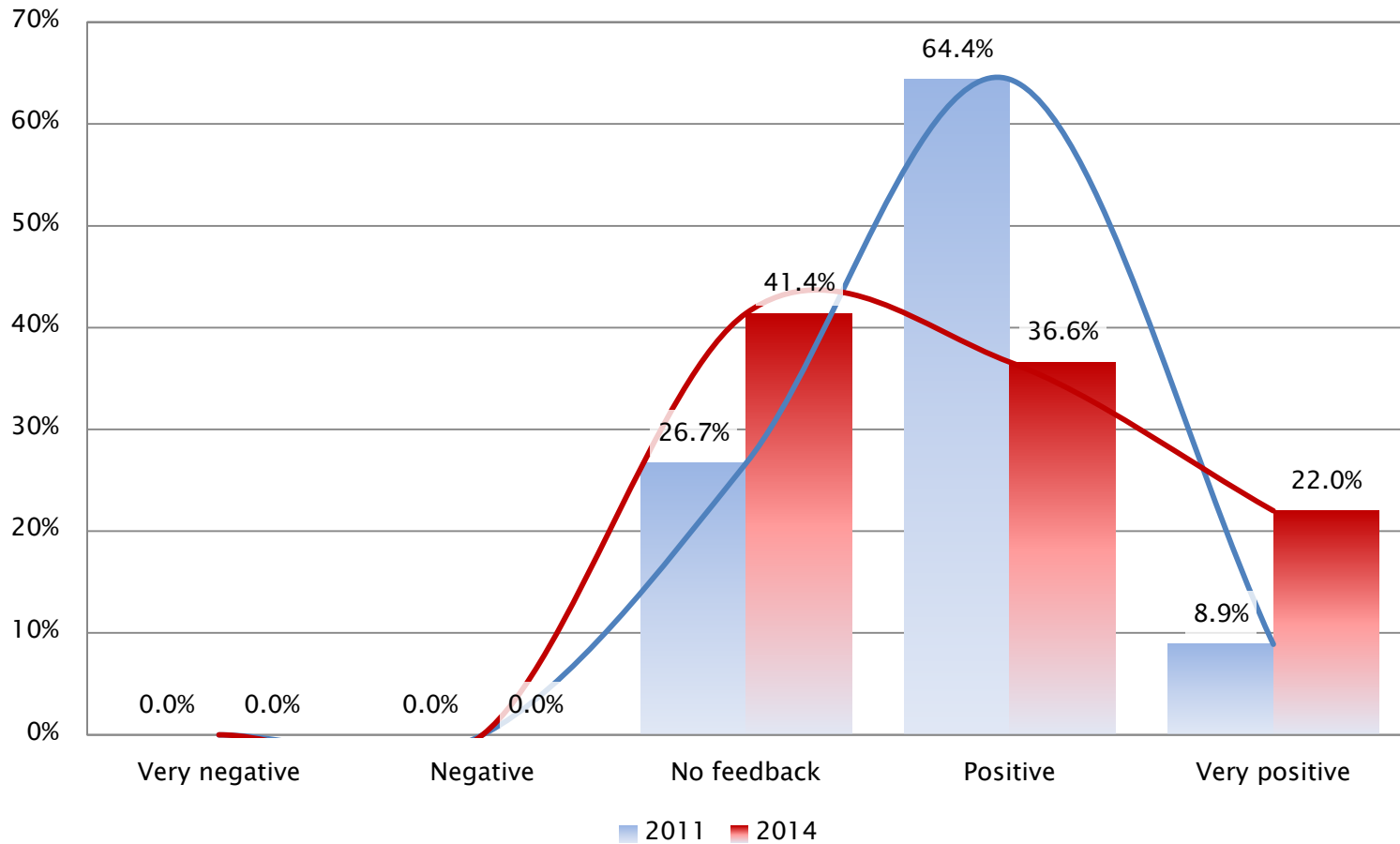
2014



Transmission of NALAS



Feedback from Municipalities



Expectations for the future

NALAS...

	2011	2014
1. To improve its influence	30%	37% (rank 1)
2. To connect LGAs even more closely	29%	15% (rank 3)
3. To be more EU active and influential	17%	23.5% (rank 2)
4. To get closer to LGAs (and LGs)	15%	11% (rank 4)
5. To continue and improve sustainability	7%	11% (rank 4)